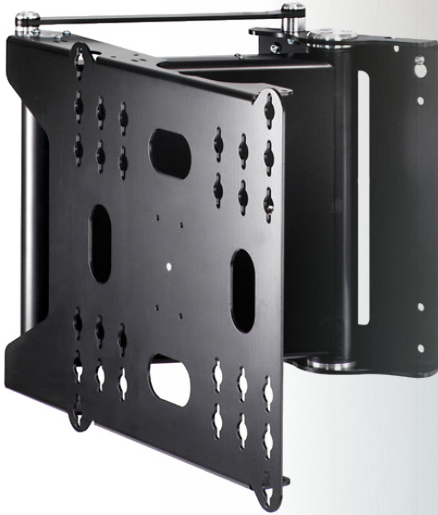




PSE90 - Product Overview

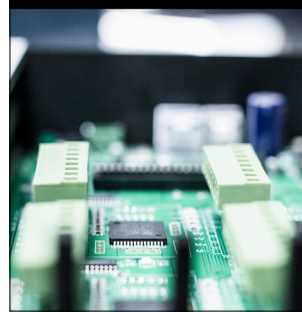


A dedicated Electric TV Mount, the PSE90 offers full rotation up to 90 degrees in one direction for larger flat screen TVs. The superbly smooth action, cable management, and neat mounting plate encapsulate the quality of Future Automation design with functionality and look unlike any other TV Mount on the market. A variety of mount options ensure that individual screens are mounted in the neatest possible way. For smaller screens see the FSE90.

Design Highlights

- ✓ Quiet smooth Action With Variable Speed Motion
- ✓ Full Cable Management
- ✓ Stylish Look and Finish
- ✓ Onboard Electronics
- ✓ Wide Range of Mounting Options

Onboard Electronics



Handbuilt in the UK



Specification

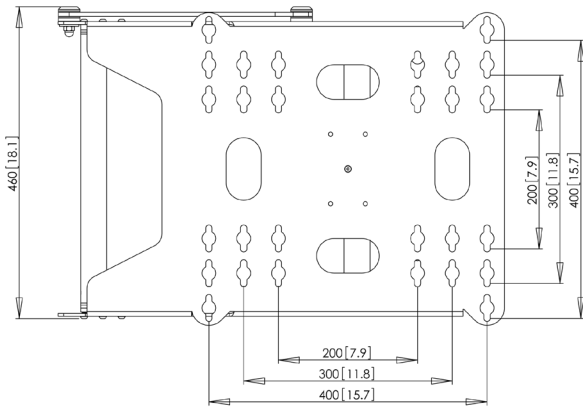
Screen Sizes	46" - 65"
Max. Screen Weight	60kg
Depth From Wall	90mm (3.54")
Max. Rotation	90°
Standard Finish	Satin Black Paint (RAL 9005)
Movement Type	Motorised



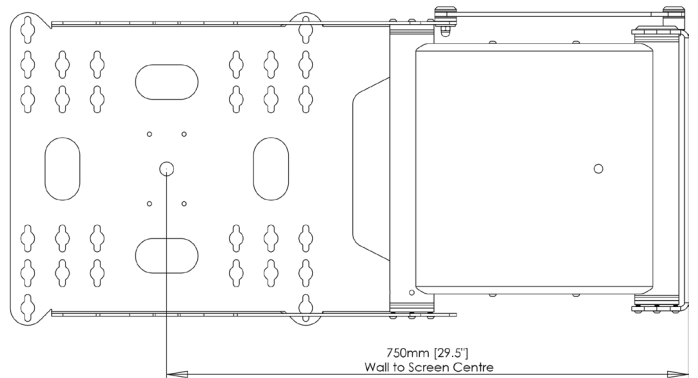


PSE90 - Product Overview

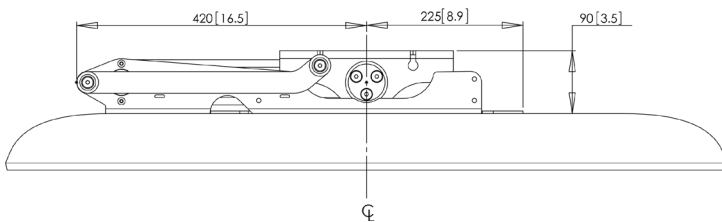
BRACKET DIMENSIONS - FRONT (IN POSITION)



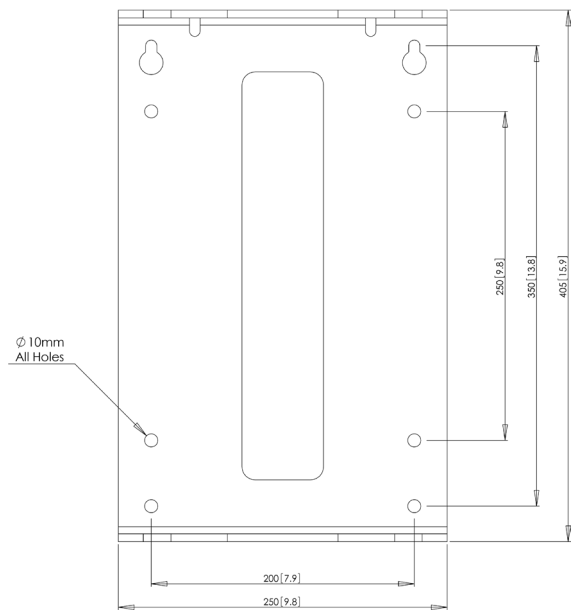
BRACKET DIMENSIONS - SIDE (OUT POSITION)



BRACKET DIMENSIONS - PLAN (IN POSITION)



WALL PLATE DIMENSIONS - FRONT

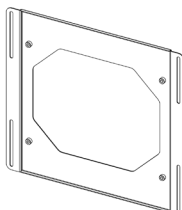
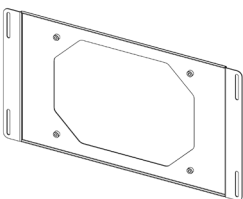


V400 STANDARD

Standard PSE90 mount is a VESA 400 mount plate.

Compatible with VESA patterns-

- 400 x 400
- 400 x 300
- 400 x 200
- 300 x 300
- 200 x 200



VARIOUS ADAPTER PLATES AVAILABLE

Standard adapter plates available for the PSE90 include the following.

- 684 x 300
- 660 x 320
- 600 x 400
- 500 x 300

